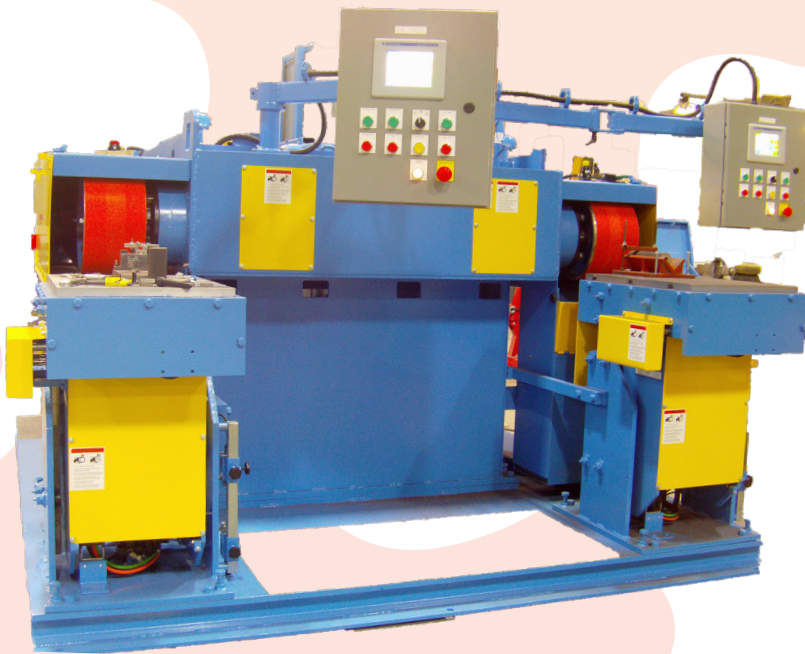
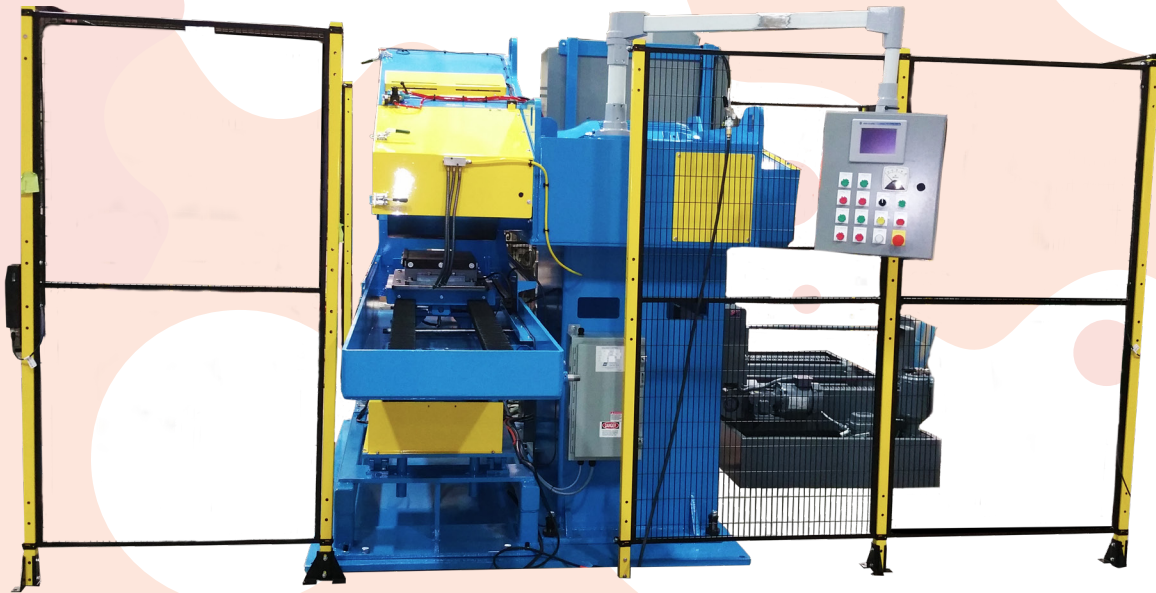




POWER GRINDERS

BULLETIN PG-3



Reduces abrasive costs-Reduces labor costs

- Grind flat or Curved Surfaces
- 25 to 75 Horsepower
- Programmable Controls
- Single End or Double End
- Single Motor or Double Motor
- Horizontal Reciprocating Table
- Rise and Fall
- Rotary Fixture

Dual Motor Grinder – Reciprocating Table on the left.
Rise and Fall Table on the right with cam for grinding contours.



GRINDING & POLISHING MACHINERY CORPORATION

2801 TOBEY DRIVE / INDIANAPOLIS, IN 46219

PHONE (317) 898-0750 • FAX (317) 899-1627

POWER GRINDERS

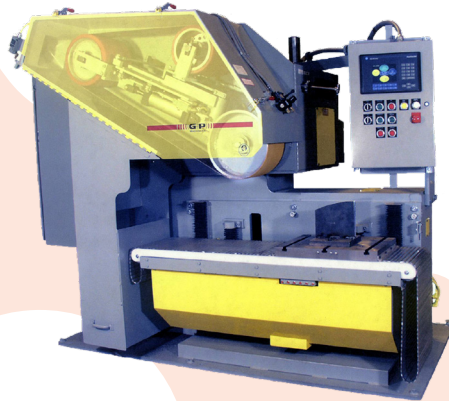
BULLETIN PG-3

MODEL

PG 25S-SS
 PG 25D-SS
 PG 30S-SS
 PG 30D-SS
 PG 40S-SS
 PG 40D-SS
 PG 50S-SS
 PG 50D-SS
 PG 75S-SS
 PG 75D-SS

MOTOR

25HP
 25HP (2)
 30HP
 30HP (2)
 40HP
 40HP
 50HP
 50HP
 75HP
 75HP (2)



- Single speed of 7500 SFPM – Standard
- Belt size: Length – 132" Standard Width – 10" Maximum
- Heavy Duty 3 7/18" bore spindle bearings.
- Pneumatic tensioning for abrasive belts.
- Electronically controlled pneumatic brake.

OPTIONS:

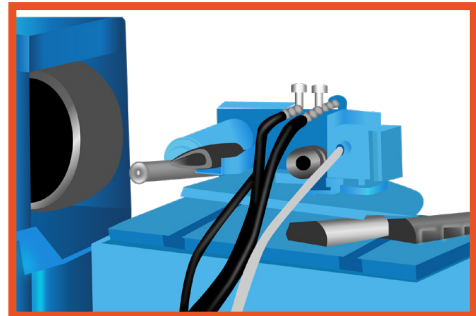
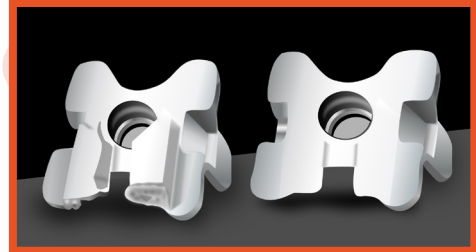
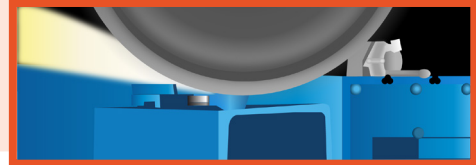
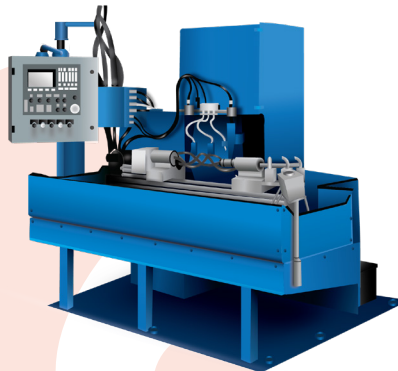
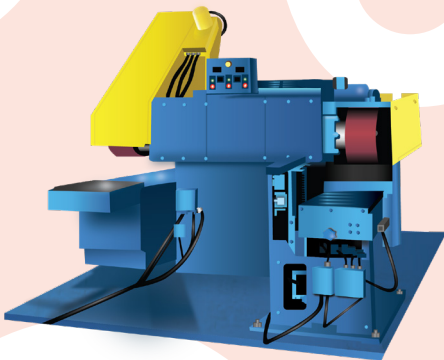
- Variable Speed
- Belt Oscillation
- Belt Break Interlock

ACCESSORIES:

- **Reciprocating Table-** Standard horizontal movement-28'
Standard clearance- 3-3/4" min, 10" max
- **Rise and Fall table Table-** Vertical movement – 8" standard
Horizontal movement – 5" standard

- Automatic Feed System.
- Automatic shut-off if belt breaks... A safety feature which provides an interlock to the idler system causing the fixture to react.

Single motor • Single End Grinder with Reciprocating Table



Rotary fixture on Rise & Fall Table.
 The casting is moved into position then rotated up to 108 degrees removing the risers. This picture shows a finished and unfinished part side by side.

Dual Motor Grinder – left side equipped with reciprocating table and rotary fixture for grinding large circular parts or multiple grinding of small parts.

Right side equipped with rise and fall table and horizontal rotary fixture for grinding small parts that have a radius.



GRINDING & POLISHING MACHINERY CORPORATION

2801 TOBEY DRIVE / INDIANAPOLIS, IN 46219

PHONE (317) 898-0750 • FAX (317) 899-1627